

# Drain Installation Guide

Stainless Steel Grate



Stainless Steel Frame



Dip Tube  
(push to locate)



1 1/2" Waste Fitting



10mm Height Extension Ring 16-26mm  
This must be fixed using solvent cement.



Membrane

Height Adjusting Ring 6-16mm Rotate  
anti-clockwise to increase height.  
This must be fixed using solvent cement.

**WARNING: Do not allow solvent to  
come into contact with membrane**



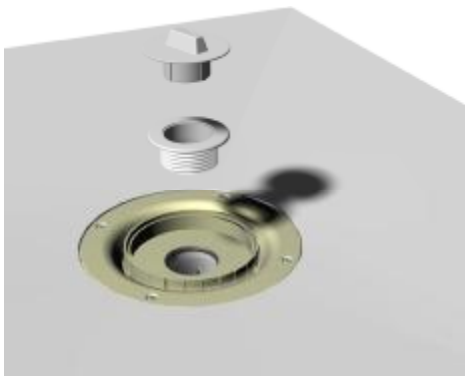
Membrane Clamp  
Use Solvent Cement on Inner  
Face to Achieve Seal.



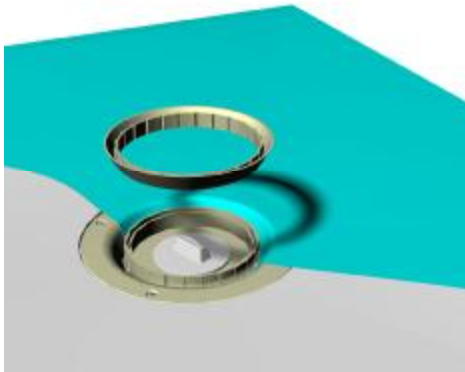
Base  
(Drill 50mm Hole with hole saw  
to connect trap and fix in  
place using screws provided).



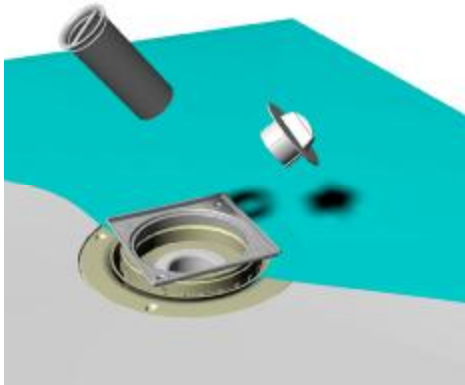
50mm Water Seal Trap With Horizontal  
Outlet (vertical Outlet Also Available).



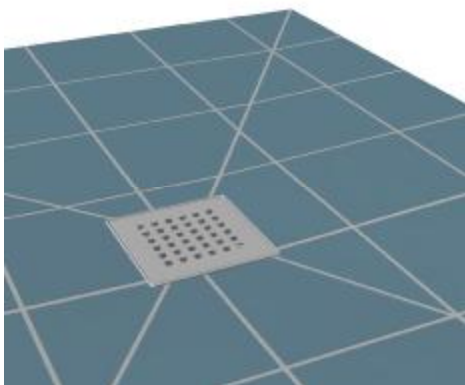
Screw the waste fitting into the gully using the dust cover key (leave dust cover key in place after tightening to prevent ingress of debris).



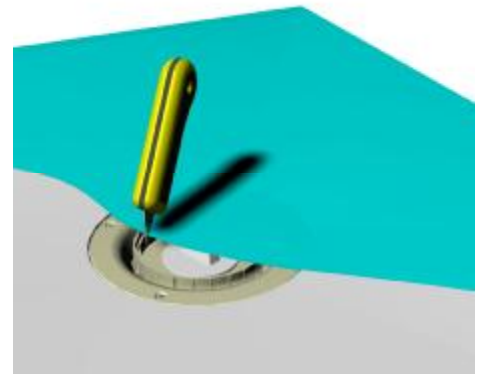
Tuck the membrane down into the membrane recess, apply solvent cement to the inside face of the clamping ring, and press clamping ring down on top of membrane until cement has set



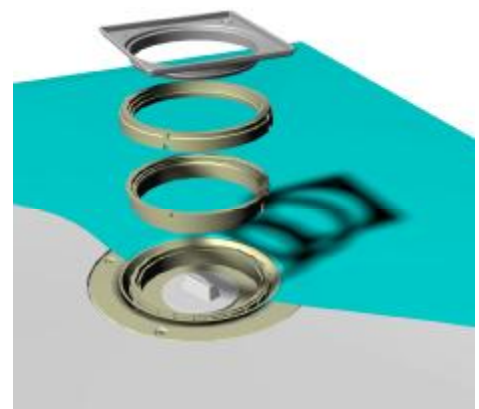
Remove the dust cover and insert dip tube.



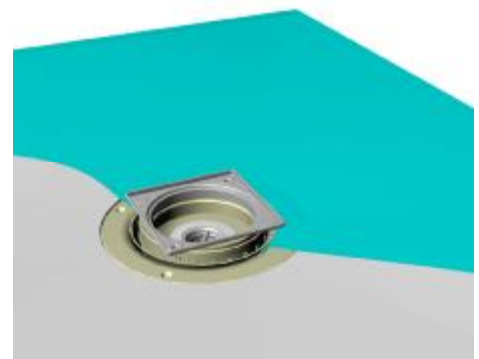
Tile floor ensuring that tiles finish flush with the top of the frame, and finally fit grate



Lay the membrane over the trap. Using a sharp knife cut out an aperture using the inner most cylindrical face as a guide. Be careful not to cut the trap



Using a tile as a reference, determine the desired height of the grating frame. (adjusting ring + frame = 6-16mm; adjusting ring + frame + extension = 16-26mm) If the extension ring is needed apply solvent cement and fix to adjuster ring. Attach the frame by snapping into place. Apply solvent to all outer edges of adjuster, position it in the base and rotate to height.



Once the solvent cement has set, rotate stainless steel frame to desired position. The gully installation is now complete.